

POWER LINES AND SUB-STATIONS

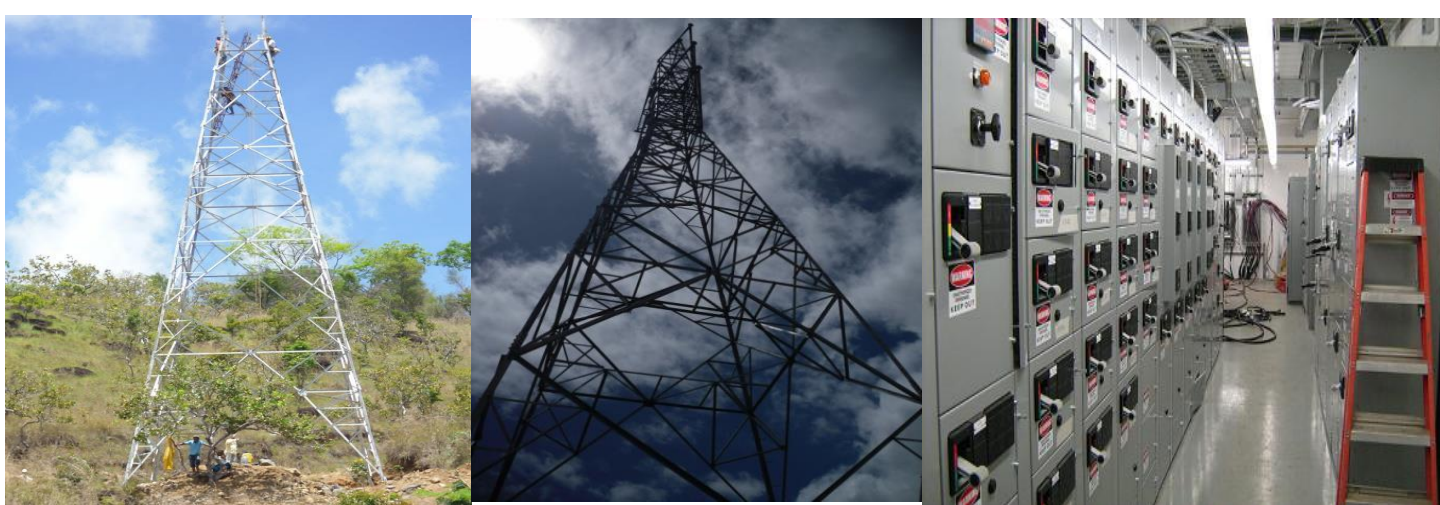
Electrical System of the Surface Facilities of Campo Hamaca Package C

Client: PETROLERA AMERIVEN (PDVSA PETROPIAR)

Location: Caracas, Venezuela

Scope: IPGC

Disciplines involved: Architecture, Civil, Structural, Electrical, Mechanical, I&C and Telecommunication Engineering



Description:

The Project was based on the development of detailed engineering, procurement management and construction for the development of Surface Facilities at Campo Hamaca, located in the state of Anzoátegui, Venezuela, Phase I, II and III of Package C (new clusters and multiphase pumping stations), corresponding to the development of facilities for commercial production. It was also included the design of the electrical system, which comprised the following:

- Twenty-two (22) electrical S/E (115 / 34,5 kV; 50 MVA and 21 of 34.5 / 480 V; 5 MVA)
- 60 Km. of power lines (34,5 Kv)
- Connection to 115kV H-frame.
- All Civil and Electromechanical works related to these facilities

